

**Product Description:** Fruit Slice, Morning Formula, 25mg CBD, 25mg CBG

**Invoice Number:** 2023-276.2

**Lot Number:** GFS-25723-B2

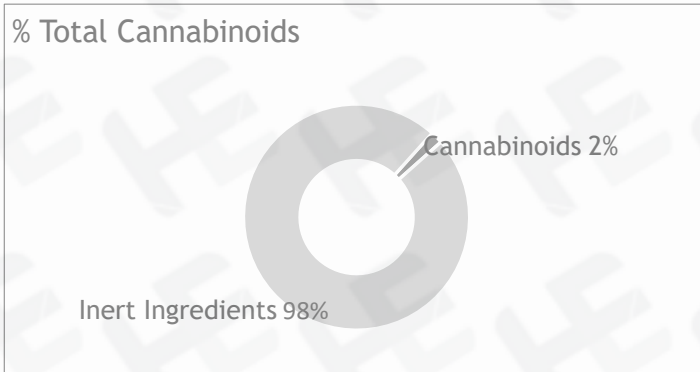
**Manufacture Date:** Sep 13, 2023

**Product Code:** GFS-25-25-ISO-CGI-MORNING

**Date of Analysis:** Sep 18, 2023

**Best By Date:** Sep 13, 2024

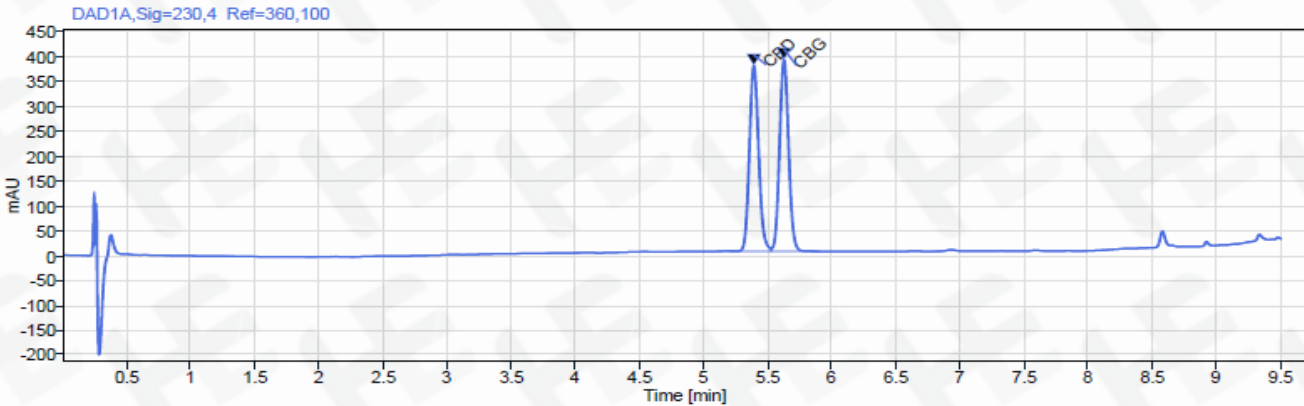
**Cannabinoid Potency - Expected CBD: 25.00 mg/unit ± 10%**



	mg/g	%	LOQ (mg/g)
<b>Total CBD:</b>	<b>26.30 mg/unit</b>	<b>2.63%</b>	0.05 mg/unit
CBD:	5.89 mg/g	0.59%	0.05 mg/g
CBDa:	<LOD	<LOD	0.05 mg/g
<b>d8-THC:</b>	<b>&lt;LOQ</b>	<b>&lt;LOQ</b>	0.05 mg/g
CBC:	5.89 mg/g	0.59%	0.05 mg/g
CBG:	5.99 mg/g	0.60%	0.05 mg/g
CBGa:	<LOQ	<LOQ	0.05 mg/g
CBN:	<LOQ	<LOQ	0.05 mg/g
CBDV:	<LOD	<LOD	0.05 mg/g
d8-THC:	<LOQ	<LOQ	0.05 mg/g
THCa:	0.14 mg/g	0.01%	0.05 mg/g
<b>Density:</b>	N/A (kg/m3)	<b>Specific Gravity:</b>	N/A

\*Total d9-THC and CBD are calculated taking into account the loss of a carboxyl group during decarboxylation. The formulas are as follows : d9-THC = d9THC + (THCa \*(0.877)) CBD = CBD + (CBDa \*(0.877))  
 \*\*Any compounds with results listed as "<LOD" were below the Limit of Detection and were not detected.  
 \*\*\*LOQ is the limit of quantitation for any given analyte.

**Chromatogram**



**Prepared By:** M. McGraw  
Analytical Lead  
Sep 19, 2023

*Mason McGraw*  
*Ellie Casey*


**Reviewed By:** E. Casey  
Formulation and R&D Manager  
Sep 19, 2023



Analyzed via HPLC Under These Conditions: Humidity: 30% Temperature: 70.2 °F

ISO 9001:2015 Certificate Number: US4293

Certificate of Analysis test results are based only on the analysis of the product listed in the "Product Description" of this form. Hammer Enterprises, LLC, makes no claims as to the efficacy, safety, or other risks associated with any detected or non-detected compounds reported herein. All analyses conducted at Hammer Enterprises, LLC, is performed on well-maintained, quality instruments utilizing Good Laboratory Practices and validated methodology. This Certificate may not be reproduced except in full, without the written approval of Hammer Enterprises, LLC. **DISCLAIMER:** When reviewing certificate ensure watermark is complete and intact. Watermark will present as repeating HE logos diagonally across the entire page. The authenticity of this document is not guaranteed if there is evident modification, blocking, or alterations of the watermark.

	Product Specification Sheet: CBD CBG Fruit Slices Broad-Spectrum 25mg CBD, 25mg CBG	Document #: PSS-GFS-ISO-CGI-MORNING Version: 2.0 Issue Date: May 26, 2020 Supersedes: Nov 07, 2019
	30616 Bryant Drive Evergreen, CO 80439	Product Code: GFS-25-25-ISO-CGI-MORNING

**SECTION 1: PRODUCT DETAILS**

<b>PRODUCT NAME</b>	CBD CBG Fruit Slices (Assorted Flavors), Broad Spectrum		
<b>PRODUCT DESCRIPTION</b>	Hemp-derived Cannabidiol (CBD) Fruit Slices (Assorted Flavors), Broad-Spectrum		
<b>INTENDED USE</b>	For oral consumption.		
<b>COUNTRY OF ORIGIN</b>	USA	<b>LOT #</b>	GFS-25723-B2
<b>MANUFACTURE DATE</b>	Sep 13, 2023	<b>CBD POTENCY</b>	26.30 mg CBD per piece
		<b>CBG POTENCY</b>	26.95 mg CBG per piece
<b>BEST BY DATE</b>	Sep 13, 2024	<b>NET WEIGHT</b>	4.5 g (0.16oz) per piece

**SECTION 2: INGREDIENT, NUTRITION & STORAGE INFORMATION**

INGREDIENTS LIST	NUTRITION FACTS PANEL PER PIECE
<p>Ingredients: Fruit Slices [Organic Glucose Syrup (Wheat), Organic Cane Sugar, Pectin, Citric Acid, Ascorbic Acid, Natural Flavors, Organic Concentrates (Apple, Carrot, Pumpkin, Black Currant), Wheat Starch], Hemp Cannabidiol (CBD) Isolate, Hemp Cannabigerol (CBG) Isolate, Organic Green Tea Extract, Terpenes.</p> <p><b>CONTAINS: WHEAT.</b></p> <p><i>Store in original container in a cool, dark place. Keep out of direct light and humidity.</i></p> <p><b>Directions for Use:</b> <i>Take 1-2 servings as needed.</i></p> <p><i>Packaged in the same facility as wheat, peanuts, tree nuts (coconut, pistachios, cashews), soy, and milk products.</i></p> <p><i>The FDA has not evaluated this product for safety or efficacy. This product is intended for oral use. This product is not intended to diagnose, treat, cure or prevent any disease.</i></p>	<div style="border: 1px solid black; padding: 5px;"> <h2 style="margin: 0;">Nutrition Facts</h2> <p>servings per container</p> <p><b>Serving size 1 piece (4.5g)</b></p> <hr/> <p>Amount per serving</p> <p><b>Calories 15</b></p> <hr/> <p style="text-align: right;">% Daily Value*</p> <p><b>Total Fat</b> 0g <span style="float: right;">0%</span></p> <p style="padding-left: 20px;">Saturated Fat 0g <span style="float: right;">0%</span></p> <p style="padding-left: 20px;">Trans Fat 0g</p> <hr/> <p><b>Cholesterol</b> 0mg <span style="float: right;">0%</span></p> <p><b>Sodium</b> 10mg <span style="float: right;">0%</span></p> <p><b>Total Carbohydrate</b> 4g <span style="float: right;">1%</span></p> <p style="padding-left: 20px;">Dietary Fiber 0g <span style="float: right;">0%</span></p> <p style="padding-left: 20px;">Total Sugars 3g</p> <p style="padding-left: 40px;">Includes 3g Added Sugars <span style="float: right;">6%</span></p> <hr/> <p><b>Protein</b> 0g</p> <hr/> <p>Vitamin D 0mcg <span style="float: right;">0%</span></p> <p>Calcium 0mg <span style="float: right;">0%</span></p> <p>Iron 0mg <span style="float: right;">0%</span></p> <p>Potassium 0mg <span style="float: right;">0%</span></p> <p>Vitamin C <span style="float: right;">10%</span></p> <hr/> <p><small>*The % Daily Value tells you how much a nutrient in a serving of food contributes to a daily diet. 2,000 calories a day is used for general nutrition advice.</small></p> </div>

*This document is provided for documentation purposes only. The information contained herein is believed to be accurate and represents the best information currently available to Hammer Enterprises Integrated Solutions, LLC. However, Hammer Enterprises Integrated Solutions, LLC makes no warranty, expressed or implied, regarding such information, and assumes no liability resulting from its use. Users should make their own investigations to determine the information suitability for their particular purposes. If there are any questions concerning the information contained in this sheet or its applicability to a particular use, the user is instructed to contact Hammer Enterprises Integrated Solutions, LLC. Hammer Enterprises Integrated Solutions, LLC assumes no responsibility for injury from the use of the product described in this sheet in a way different from that provided in the label directions.*